

TECHNICAL DATA SHEET (TDS) GEAR REDUCER EXCHANGE & REPAIR

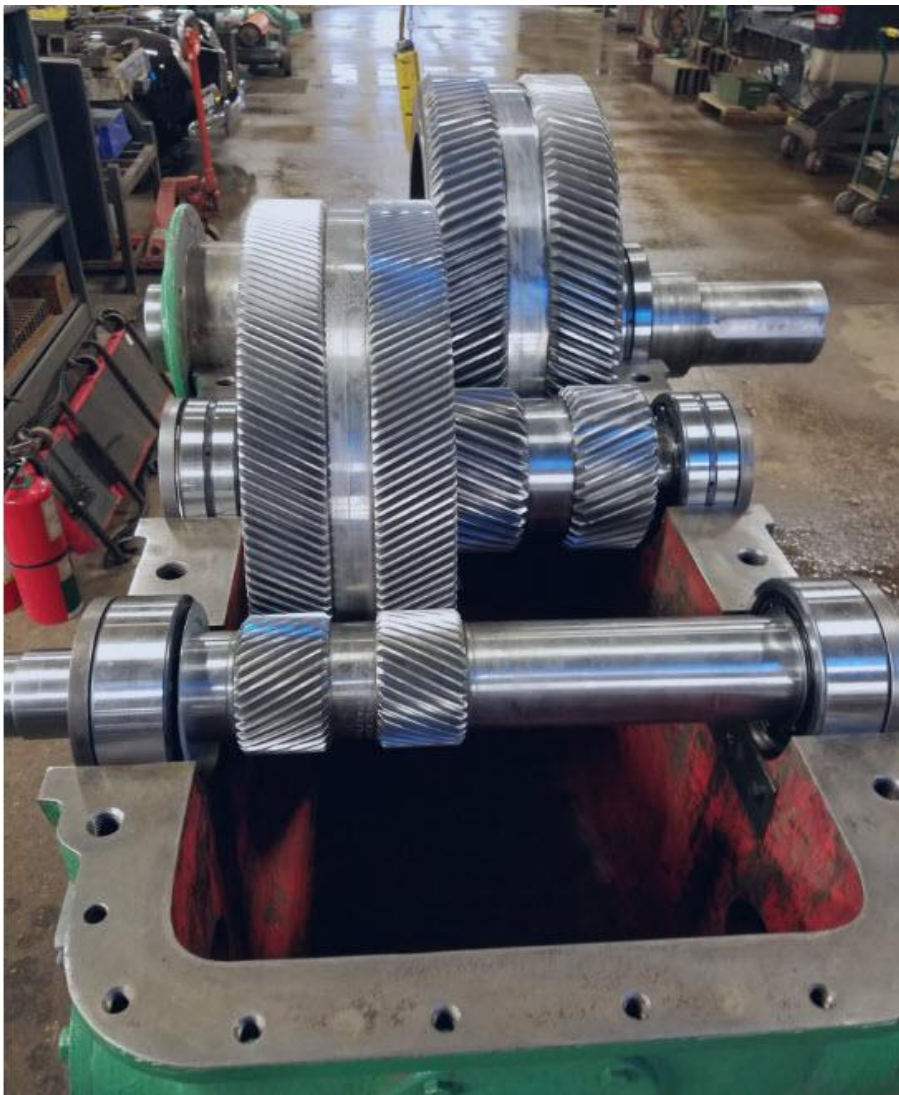
Gear Reducer Repair & Exchange Program

All of the gear reducer repair and rebuilds are performed to the manufacturer's original specifications. Our affiliate has over 90 years combined experience on gear reducers by Falk, Dodge, Link, Belt, Lightnin, Philadelphia and more. Throughout the years, they have acquired a vast library of gear reducer manufacturer information. They are able to quickly service all makes and model reducers, blotters and pumps.

They believe in providing the MOST cost-effective solutions. They will provide information for a gear reducer rebuild with all new components while also quoting warranted parts from our extensive gear box inventory, at significant cost savings. Our affiliate has been in operation since 1987 and their experience started in the mid-60's in Mechanical Engineering work for a Paper Mill.

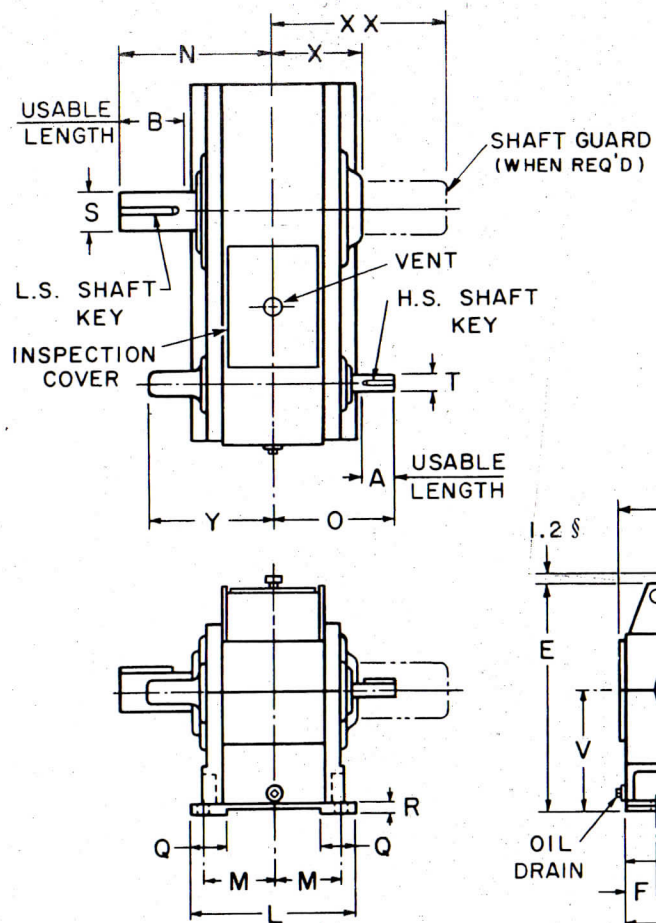
IN the United States, they are a very quiet and **EXCLUSIVE** go-to source for the specialization of gear box, repair, rebuild, sales and service.

Most of the gearboxes repaired and or rebuilt are **FALK**. Below find complete charts for most of the common Falk gearboxes. If you have a different manufacturer's requirement, please submit NMFC an inquiry for a Factory-Direct quotation.

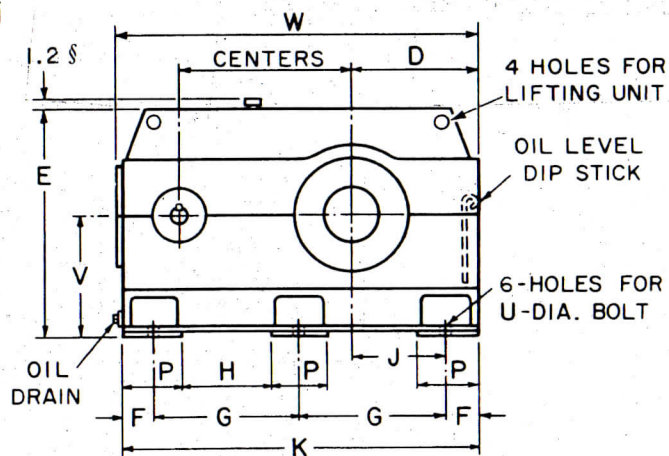
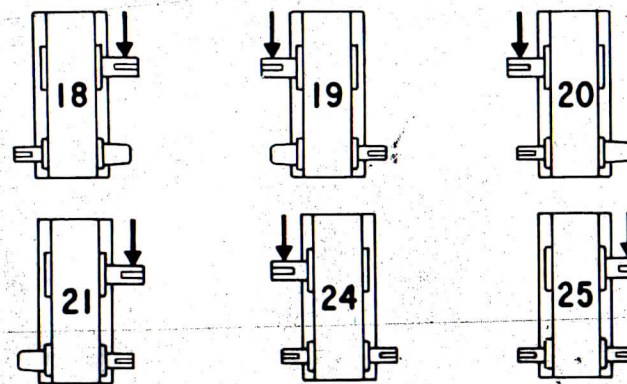


Types Y and YT Dimensions — Inches

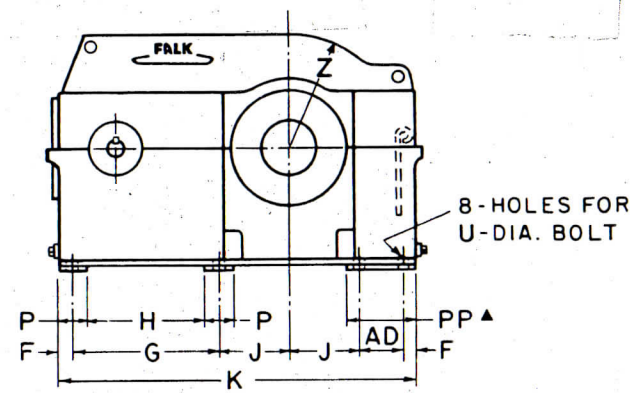
Parallel Shaft Reducers Single, Double & Triple Reductions Sizes 2050 through 2155 (Fan Dimensions on Page 40)



Standard Assemblies



ELEVATION: SIZES 2050 thru 2135
(6 FOUNDATION HOLES)



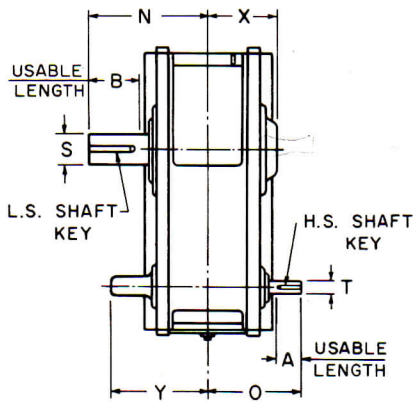
ELEVATION: SIZES 2140 thru 2155
(8 FOUNDATION HOLES)

UNIT SIZE ★	B	D	E	F	G	H†	J	K	L	M	N	P‡	Q	R	L.S. SHAFT*		U	V	W	X	XX•	Z	AD
															S	Key							
2050	4	8 1/2	15 3/4	2 1/2	9 1/4		6	23 1/2	11 1/2	4 7/8	11		2 3/4	5/8	2.750	5/8x 5/8x4	3/4	8	24	6 1/8	12 5/16		
2060	4 13/16	9 1/2	17 3/4	2 1/2	10 7/8		7	26 3/4	12 1/4	5 1/4	12		3 1/8	5/8	3.000	3/4x 3/4x4 1/2	3/4	9	27 1/8	6 3/4	14 1/16		
2070	5 3/8	10 5/8	20 1/8	3	12 1/8		7 5/8	30 1/4	14	5 7/8	13 1/2		3	3/4	3.500	7/8x 7/8x5	1	10 1/4	30 5/8	7 3/8	14 5/8		
2080	6 7/16	12 1/8	22 1/2	3	14 1/2		9 1/8	35	15 1/2	6 5/8	15 1/8		3 3/4	3/4	4.000	1 x1 x6	1	11 1/2	35 3/8	8 1/8	15 3/4		
2090	7 1/16	13 3/8	25 3/8	3 3/8	15 1/2		10	37 3/4	16 3/4	7 1/8	16 1/2		3 3/8	1 5/16	4.500	1 x1 x7	1 1/8	13	38 1/8	8 5/8	17 3/4		
2100	8 1/4	15	29 3/16	3 3/8	18		11 5/8	42 3/4	18 1/2	8	18 1/2		3 1/4	1 5/16	5.000	1 1/4x1 1/4x7 1/2	1 1/8	14 1/2	43 1/8	9 3/4	19 1/2		
2110	9 1/16 †	17	32 13/16	3 1/2	19 3/4		13 1/2	46 1/2	19 1/2	8 3/8	19 7/8		4 3/4	1 1/16	5.500	1 1/4x1 1/4x8 1/2 †	1 1/4	16 1/4	46 7/8	10 1/4 ‡	20 1/2 ■		
2120/2125	9 7/8 †	18 3/4	36 1/16	3 5/8	22 1/2	15 1/4	15 1/8	52 1/4	21	9 1/8	21 1/2	7 1/4	4	1 1/16	6.000	1 1/2x1 1/2x9 †	1 1/4	18	52 1/16	11 ‡	22 1/4 ■		
2130/2135	10 1 1/16 †	20 3/8	39 15/16	4 1/4	24 3/4	16 1/4	16 3/8	58	23 3/4	10 1/4	23 1/2	8 1/2	4	1 1/8	6.500	1 1/2x1 1/2x10	1 1/2	20	58 7/16	12 1/8	24 1 1/32 ■		
2140/2145	12 1/8	23 3/4	45	3	27 3/4	18 3/4	11 1/2	65 1/2	30 1/2	13 3/8	28 1/4	8	6	1 1/4	7.250	1 3/4x1 1/4x11	1 3/4	22 1/2	67	15 1/2	29	21 3/8	8 3/4
2150/2155	12 5/8	26	49 3/4	3	32 1/2	23 1/2	12	73	32	14 1/8	29 3/4	8	6	1 1/2	7.750	2 x1 1/2x12	1 3/4	25	74 1/2	16 1/4	30 1/2	23 7/8	10 1/2

UNIT SIZE ★	Single Reduction						Double Reduction					Triple Reduction									
	Wt lb	Centers	A w/o Fan	O	Y	H.S. SHAFT*		Wt lb	Centers	A w/o Fan	O	Y	H.S. SHAFT*		Wt lb	Centers	A w/o Fan	O	Y	H.S. SHAFT*	
						T	Key						T	Key						T	Key
2050	440	7.500	3 1/16	9 7/8	10 29/32	1.750	3/8x 3/8x3	450	12.187	2 1/4	9 1/8	9 7/8	1.250	1/4x1/4x2 1/2	450	12.187	2 1/16	8 3/4	9 7/8	1.125	1/4x1/4x2 1/4
2060	560	8.500	3 3/8	10 3/4	11 11/32	2.000	1/2x 1/2x3 1/2	580	14.125	2 5/8	9 7/8	10 1/4	1.500	3/8x3/8x2 3/4	580	14.125	2 1/16	9 1/8	10 1/4	1.125	1/4x1/4x2 1/4
2070	780	9.750	3 7/8	11 7/8	12 3/4	2.250	1/2x 1/2x4	810	16.000	3 1/16	10 7/8	11 3/4	1.750	3/8x3/8x3	820	16.000	2 7/16	10 1/8	11 3/4	1.250	1/4x1/4x2 1/2
2080	1,100	11.000	4 1/8	13	14	2.500	5/8x 5/8x4	1,190	18.500	3 3/8	12 1/8	12 1/2	2.000	1/2x1/2x3 1/2	1,200	18.500	2 7/16	10 7/8	12 1/2	1.250	1/4x1/4x2 1/2
2090	1,630	12.500	4 3/4	14	14 1/2	2.750	5/8x 5/8x4 1/2	1,720	20.000	3 7/8	13 1/8	14	2.250	1/2x1/2x4	1,720	20.000	2 7/8	11 3/4	14	1.500	3/8x3/8x3
2100	1,910	14.250	5 1/16	15 1/2	16 7/8	3.000	3/4x 3/4x5	2,020	22.750	4 1/8	14 3/8	14 7/8	2.500	5/8x5/8x4	2,020	22.750	2 7/8	12 5/8	14 7/8	1.500	3/8x3/8x3
2110	2,420	16.000	5 1 1/16	16 1/4	17 1/2	3.500	7/8x 7/8x5 1/2	2,580	24.500	4 3/4	15 1/4	15 3/4	2.750	5/8x5/8x4 1/2	2,610	24.500	3 1/16	13 3/8	15 3/4	1.750	3/8x3/8x3
2120/2125	3,250	18.000	6 5/16	17 3/8	18 1/4	4.000	1 x1 x6	3,390	27.750	5 1/16	16 5/8	17 7/8	3.000	3/4x3/4x5	3,460	27.750	3 1/2	14 3/4	17 7/8	2.000	1/2x1/2x3 1/2
2130/2135	4,520	20.000	6 3/4	19 1/4	20 7/8	4.500	1 x1 x6 1/2	4,630	31.000	6	18 1/8	19	3.250	3/4x3/4x5 1/2	4,880	31.000	3 1/2	15 7/8	19	2.000	1/2x1/2x3 1/2
2140/2145	6,900	22.500	8 5/8	22 1/8	24 1/4	5.000	1 1/4x1 1/4x8	7,090	35.000	5 1 5/16	19 3/8	20 1/4	3.500	7/8x7/8x6	7,620	35.000	4 1/16	17 3/8	20 1/4	2.250	1/2x1/2x4
2150/2155	8,460	39.250	5 1 5/16	20 1/8	22 1/2	3.500	7/8x7/8x6	8,540	39.250	4 1/16	18 1/2	22 1/2	2.500	5/8x5/8x4

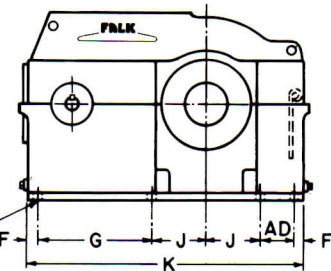
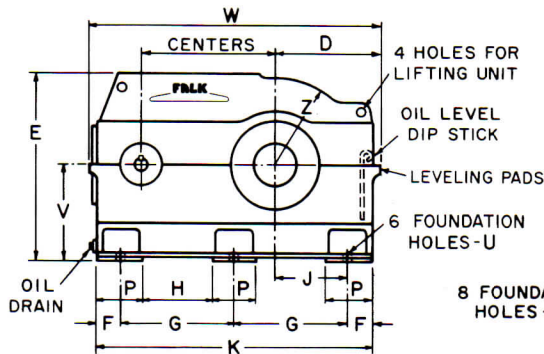
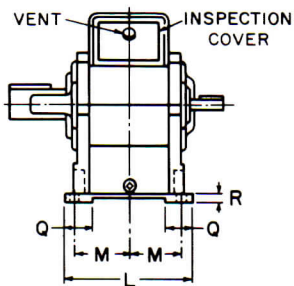
- ▲ Dimension PP is 14 3/4" for 2140/2145 and 17 1/2" for 2150/2155.
- ◆ Sizes 2050 through 2110 have foundation pads full length of base.
- ★ Units are for horizontal floor mounted operation unless specifically stated otherwise. Consult Factory for other mountings. Dimensions are for reference and subject to change without notice unless certified.
- Dimension "XX" is 21" for 2110YT, 23 5/8" for 2120/2125YT and 24 1/4" for 2130/2135YT.
- § Dimension for Sizes 2050 thru 2135 only.

- * Shaft diameters under 3" are held to limits of +.0000", -.0005
- Shaft diameters 3" and over are held to limits of +.000", -.001
- Shaft keyseat depth is one-half of key height.
- † For YT unit, reduce this dimension by 1/2".
- ‡ Dimension "X" is 10 3/4" for 2110YT and 11 1/2" for 2120 and 2125Y
- Double extension will be furnished only when specified on the order.



TYPES Y and YT

- ... Single Reduction Y1 and YT1
- ... Double Reduction Y2 and YT2
- ... Triple Reduction Y3 and YT3



ELEVATION: SIZES 2050 thru 2135
(6 FOUNDATION HOLES)

ELEVATION: SIZES 2140 thru 2155
(8 FOUNDATION HOLES)

UNIT SIZE	B	D	E	F	G	H†	J	K	L	M	N	P‡	Q	R	L.S. SHAFT		U	V*	W	X	Z	AD
															S*	Key*						
2050	47/8	87/8	157/8	2 1/2	9 1/4	5	6	23 1/2	11 1/2	47/8	11	4 1/2	2 1/2	5/8	2.750	5/8x 5/8x4	1 3/16	8	24 3/4	6 1/8	7 9/16	...
2060	5 1/4	97/8	177/8	2 1/2	10 7/8	6 5/8	7	26 3/4	12 1/4	5 1/4	12	4 1/2	2 1/2	5/8	3.000	3/4x 3/4x4 1/2	1 3/16	9	27 7/8	6 3/4	8 1/16	...
2070	6 1/8	11	20 1/4	3	12 1/8	6 1 1/16	7 5/8	30 1/4	14	5 7/8	13 1/2	5 5/8	3	3/4	3.500	7/8x 7/8x5	1 1/16	10 1/4	31 3/8	7 3/8	9 1 1/16	...
2080	7	12 1/2	22 7/8	3	14 1/2	9 1/16	9 1/8	35	15 1/2	6 5/8	15 1/8	5 5/8	3	3/4	4.000	1 x1 x6	1 1/16	11 1/2	36 1/8	8 1/8	10 7/8	...
2090	7 7/8	13 3/4	25 3/4	3 3/8	15 1/2	...	10	37 3/4	16 3/4	7 1/8	16 1/2	...	3 3/8	1 5/16	4.500	1 x1 x7	1 3/16	13	38 7/8	8 5/8	12 1/4	...
2100	8 3/4	15 3/8	29	3 3/8	18	...	11 5/8	42 3/4	18 1/2	8	18 1/2	...	3 1/4	1 5/16	5.000	1 1/4x1 1/4x7 1/2	1 3/16	14 1/2	43 3/8	9 3/4	13 7/8	...
2110	9 5/8†	17 3/8	32 1/2	3 1/2	19 3/4	...	13 1/2	46 1/2	19 1/2	8 3/8	19 7/8	...	4 3/4	1 1/16	5.500	1 1/4x1 1/4x8 1/2†	1 5/16	16 1/4	47 5/8	10 1/4 ‡	15 5/8	...
2120/2125	10 1/2†	19 3/16	36	3 3/8	22 1/2	...	15 1/8	52 1/4	21	9 3/8	21 1/2	...	4 1/2	1 1/16	6.000	1 1/2x1 1/2x9†	1 5/16	18	53 1/16	11 ‡	17 3/8	...
2130/2135	11 3/8	21 1/16	40	4 1/4	24 3/4	...	16 3/8	58	23 3/4	10 1/4	23 1/2	...	4 7/8	1 1/8	6.500	1 1/2x1 1/2x10	1 1/16	20	59 5/16	12 1/8	19 1/4	...
2140/2145	12 3/4	23 3/4	45	3	27 3/4	...	11 1/2	65 1/2	30 1/2	13 3/8	28 1/4	...	7 1/4	1 1/4	7.250	1 3/4x1 1/4x11	1 3/16	22 1/2	67	15 1/2	21 5/8	8 3/4
2150/2155	13 1/2	26	49 3/4	3	32 1/2	...	12	73	32	14 1/8	29 3/4	...	7	1 1/2	7.750	2 x1 1/2x12	1 3/16	25	74 1/2	16 1/4	23 7/8	10 1/2

UNIT SIZE	Single Reduction						Double Reduction						Triple Reduction								
	Wt lb	Centers	A	O	Y	H.S. SHAFT		Wt lb	Centers	A	O	Y	H.S. SHAFT		Wt lb	Centers	A	O	Y	H.S. SHAFT	
						T*	Key*						T*	Key*						T*	Key*
2050	440	7.500	37/8	97/8	10 3/4	1.750	3/8x 3/8x3	450	12.187	3 1/8	9 1/8	9 7/8	1.250	1/4x 1/4x2 1/2	450	12.187	27/8	8 3/4	9 7/8	1.125	1/4x 1/4x2 1/4
2060	560	8.500	4 3/8	10 3/4	11 1/8	2.000	1/2x 1/2x3 1/2	580	14.125	3 1/2	9 7/8	10 1/4	1.500	3/8x 3/8x2 3/4	580	14.125	27/8	9 1/8	10 1/4	1.125	1/4x 1/4x2 1/4
2070	780	9.750	4 3/4	11 7/8	12 3/4	2.250	1/2x 1/2x4	810	16.000	3 7/8	10 7/8	11 3/4	1.750	3/8x 3/8x3	820	16.000	3 1/8	10 7/8	11 3/4	1.250	1/4x 1/4x2 1/2
2080	1000	11.000	5 1/8	13	14	2.500	5/8x 5/8x4	1,090	18.500	4 3/8	12 1/8	12 1/2	2.000	1/2x 1/2x3 1/2	1,100	18.500	3 1/8	10 7/8	12 1/2	1.250	1/4x 1/4x2 1/2
2090	1400	12.500	5 5/8	14	14 1/2	2.750	5/8x 5/8x4 1/2	1,490	20.000	4 3/4	13 1/8	14	2.250	1/2x 1/2x4	1,490	20.000	3 1/2	11 3/4	14	1.500	3/8x 3/8x3
2100	1910	14.250	6	15 1/2	16 3/8	3.000	3/4x 3/4x5	2,020	22.750	5 1/8	14 3/8	14 7/8	2.500	5/8x 5/8x4	2,020	22.750	3 1/2	12 5/8	14 7/8	1.500	3/8x 3/8x3
2110	2420	16.000	6 3/8	16 1/4	17 1/2	3.250	3/4x 3/4x5 1/2	2,580	24.500	5 5/8	15 1/4	15 3/4	2.750	5/8x 5/8x4 1/2	2,550	24.500	3 7/8	13 3/8	15 3/4	1.750	3/8x 3/8x3
2120/2125	3250	18.000	6 3/4	17 3/8	18 1/4	3.500	7/8x 7/8x6	3,390	27.750	6	16 3/8	17 7/8	3.000	3/4x 3/4x5	3,460	27.750	4 3/8	14 3/4	17 7/8	2.000	1/2x 1/2x3 1/2
2130/2135	4520	20.000	7 1/2	19 1/4	20 7/8	4.000	1 x1 x6 1/2	4,630	31.000	6 3/8	18 1/8	19	3.250	3/4x 3/4x5 1/2	4,680	31.000	4 3/8	15 7/8	19	2.000	1/2x 1/2x3 1/2
2140/2145	6900	22.500	8 7/8	22 1/8	24 1/4	4.500	1 x1 x8 1/2	7,090	35.000	6 3/4	19 3/8	20 1/4	3.500	7/8x 7/8x6	7,160	35.000	4 3/4	17 3/8	20 1/4	2.250	1/2x 1/2x4
2150/2155	8260	25.000	9	23	24 1/16	5.000	1 1/4x1 1/4x8	8,460	39.250	6 3/4	20 1/8	22 1/2	3.500	7/8x 7/8x6	8,540	39.250	5 1/8	18 1/2	22 1/2	2.500	5/8x 5/8x4 1/2

* Units are for horizontal floor mounted operation unless specifically stated otherwise. Consult Factory for other mountings. Dimensions are for reference and subject to change without notice unless certified.
 † Sizes 2090 through 2155 have foundation pads full length of base.

‡ For YT unit, reduce this dimension by 1/2".
 † Dimension "X" is 10 3/4" for 2110YT and 11 1/2" for 2120 and 2125YT.
 * Shaft diameters under 3" are held to limits of +.0000", -.0005".
 Shaft diameters 3" and over are held to limits of +.000", -.001".
 • Shaft keyseat depth is one-half of key height.