

Fire Pumps

Horizontal Split-Case Pumps

Vertical Turbine Pumps

End Suction Pumps

Horizontal Multistage Pumps

Inline Pumps

Our Supplier's Pump Fire Pump Units, Systems, and Packaged Systems

Our supplier's Fire Pump installations are UL approved and Follow NFPA 20 and CCCF. They deliver superior fire protection to facilities worldwide . This supplier 's pump have been offering complete service , from engineering assistance to in-house fabrication to field start-up. Products are designed from a broad selection of pumps, drives, controls, base plates and accessories . Pump choices include horizontal , in-line and end suction centrifugal fire pumps as well as vertical turbine pumps.

Both horizontal and vertical models provide capabilities up to 5,000 gpm. End suction models deliver capacities to 2,000 gpm. In-line units can produce 1,500 gpm. Head ranges from 100 ft to 1,600 ft with as much as 500 meters. Pumps are powered with electric motors, diesel engines or steam turbines. Standard fire pumps are Ductile cast iron with bronze fittings. Our supplier offers

Applications

Applications vary from small, basic electric motor driven to diesel engine driven, packaged systems. Standard units are designed to handle fresh water, but special materials are available for sea water and special liquid applications. The TONGKE Fire Pumps give superior performance in Agriculture, General Industry, Building Trade, Power Industry, Fire Protection, Municipal, and Process applications.



Features

State of the art engineered systems arrive ready to install. Pump, driver and controller are mounted on a common base. All engineered systems have complete, interconnected wiring . Pre -construction eliminates costly , complex installation problems . In-house fabrication gives you the ability to customize a system and assume complete unit responsibility , which means the customer has only one supplier to contact if there are questions. All pump package system meet the requirements of UL LIST, NFPA 20, and CCCF . Our Pump 's extensive distribution system provides worldwide technical and commercial support with qualified personnel in most major Aisa and international



Quality Engineering

Our Supplier's Pump designs are tough, versatile products to meet your pumping needs. The fire pump units and systems, durability, standardized options and configurations unequaled in the industry. Please contact us or local authorized sales office to find out more about our fire pump options and prices.

Fire Protection

You have decided to reduce the risk of fire damage to your facility by installing a UL, ULC listed fire pump system. Your next decision is which system to purchase.

You want a fire pump that is proven in installations worldwide. Manufactured by an professional with vast experience in the fire protection field. You want complete service to field start-up. You want a OUR Pumps!



Providing Pumping Solutions NMFC Can Fulfill Your Requirements:

- Complete in-house fabrication capabilities
- Mechanical-run test capabilities with customer furnished equipment for all NFPA standards
- Horizontal models for capacities to 2,500 gpm
- Vertical models for capacities to 5,000 gpm
- In-line models for capacities to 1,500 gpm
- End suction models for capacities to 1,500 gpm
- Drives: electric motor or diesel engine
- Basic units and packaged systems.

Fire Pump Units & Packaged Systems

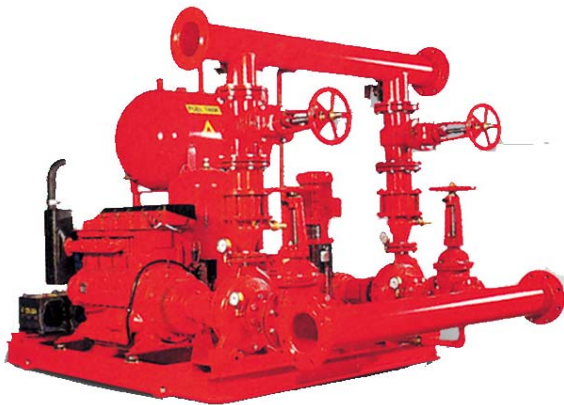
Electric Motor Drive and Diesel Engine Drive fire pumps can be furnished for any combination of pumps, drives, controls and accessories for listed and approved and non-listed fire service applications. Packaged units and systems lower fire pump installation costs and offer these advantages:

- Pump, driver, and controller are mounted on a common base.
- Common baseplate unit eliminates the need for separate mounting surfaces.
- Common unit minimizes the need for interconnecting wiring and assembly.
- Equipment arrives in a consolidated shipment, allowing faster and simplified installation and handling.
- Custom designed system, including accessories, fittings, and layouts available to meet the customer's specifications.
- To ensure design

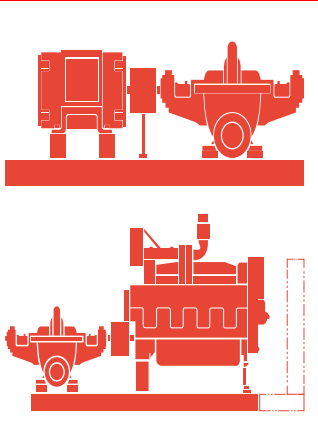
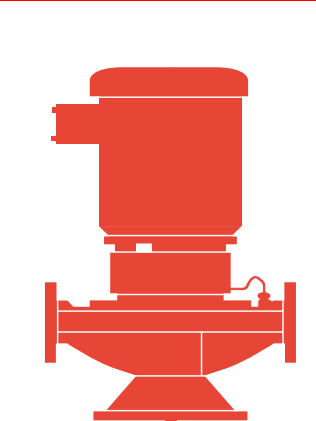
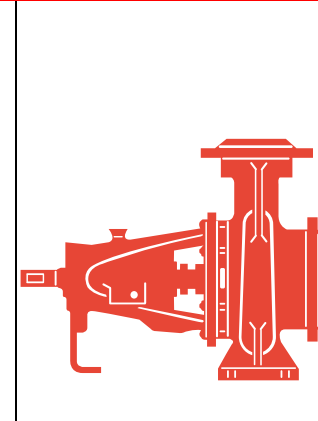
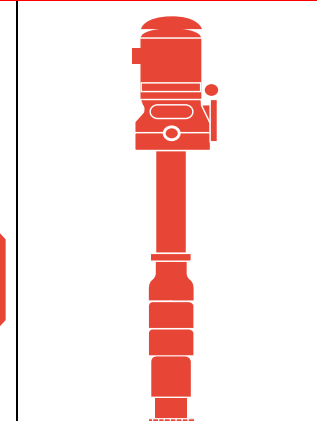


Our Advantages:

Our Supplier has the capability to design and build a system to meet your customized needs. We will review your requirements and design a system that is right for you. If you are looking for simple solutions to complex problems, they have the answer. Let us build your Packaged System so you can focus on the rest of your project.



TONGKE Fire Product Line Features and Specifications

	 <p>Split Casing Pump (UL Listed)</p>	 <p>In-Line Fire Pumps,</p>	 <p>End Suction Fire pump</p>	 <p>Vertical Fire Pumps</p>
Type of Pump	Horizontal centrifugal pumps with appropriate fittings for providing water supply to fire protection systems in buildings, plants and yards.	Compact in-line centrifugal fire pumps with appropriate fittings for providing water supply to fire protection systems in buildings, plants and yards.	End suction centrifugal fire pumps with appropriate fittings for providing water supply to fire protection systems in buildings, plants and yards.	Vertical turbine pumps with appropriate fittings for providing water supply to fire protection systems in buildings, plants and yards.
Capacity	300 to 2,500 gpm (68 to 567 m3/hr)	50 to 1,500 gpm (11 to 340 m3/hr)	Up to 2,500 gpm (567 m3/hr)	250 to 5,000 gpm (57 to 1,136 m3/hr)
Head	90 to 650 feet (26 to 198 meters)	Up to 406 feet (123 meters)	Up to 340 feet (104 meters)	92 to 849 feet (28 to 259 meters)
Pressure	Up to 650 psi (45 kg/cm ² , 4,483 kPa)	Up to 175 psi (12 kg/cm ² , 1,207 kPa)	Up to 147 psi (10 kg/cm ² , 1,014 kPa)	To fit the application.
House Power	Up to 800 hp (597 kW)	Up to 220 hp (160 kW)	Up to 350 hp (260 kW)	Up to 600 hp (448 kW)
Divers	Horizontal electric motors, diesel engines, and steam turbines.	Vertical close coupled electric motors.	Horizontal electric motors and diesel engines.	Vertical electric motors and diesel engines with right right angle gears, and steam turbines.
Liquid type	Water or sea water	Water or sea water	Water.	Water or sea water
Temperature	Ambient within the limits for satisfactory equipment operation.	Ambient within the limits for satisfactory equipment operation.	Ambient within the limits for satisfactory equipment operation.	Up to 115°F (46°C)
Material of Construction	Cast iron, bronze fitted as standard. Optional materials available for sea water applications.	Cast iron, bronze fitted.	Cast iron, bronze fitted.	Cast iron, bronze fitted as standard. Optional materials available for sea water applications.



Fire Pumps

Horizontal Split-Case, Vertical Turbine, In-Line and End Suction Pumps

Accessories

To meet the recommendations of the standards of the National Fire Protection Association as published in their Pamphlet 20, current edition, certain accessories are required for all fire pump installations. They will vary, however, to fit the needs of each individual installation and the requirements of the local insurance authorities. Tongke Pump provides a wide range of fire pump fittings which include: concentric discharge increaser, casing relief valve, eccentric suction reducer, increasing discharge tee, overflow cone, hose valve head, hose valves, hose valve caps and chains, suction and discharge gauges, relief valve, automatic air release valve, flow meter, and ball drip valve. No matter what the requirements, Sterling has a complete line of accessories available and can satisfy the requirements of each installation.

The charts reproduced below graphically illustrate the many accessories as well as the optional drives that are available with all Tongke fire pumps and packaged systems.

